

OVERVIEW



Figure 1 – Jewel Box CR.050.5

Name:

JEWEL BOX

Part Number:

CR.050.5

Description:

The Jewel Box combines the display area with lower cabinet drawers and security. The Jewel Box contains all of our signature features including the plug & play LED lighting system, 310 light points for maximum versatility, connections for backlighting accessories, filtered fan system for dust prevention, retractable wheel base system for easy moving, interchangeable interiors and keyed security for the viewing area and storage cabinet.

DIMENSIONS

OVERALL DIMENSIONS	Height	76.7 inches
	Width	47.4 inches
	Depth	19.8 inches
	Weight	617 pounds

VIEWING AREA	Height	31 inches
	Width	40.5 inches
	Depth	18 inches

STORAGE	4 DRAWERS – INTERIORS	
	Height	4.75 inches
	Width	18.25 inches
	Depth	14.5 inches
	LOWER STORAGE BAY	
	Height	12 inches
	Depth	16.5 inches

FINISHES

Exterior Finish

The Jewel Box is constructed with rigid aluminum framing and finished with factory coated standard glass.

- Standard colors are Black & White.
- Custom colors available upon request.
- Wood exteriors and veneer matching available upon request

Interior Finish

Constructed with a combination of wood and aluminum

- Standard colors are Black & White.
- Custom colors available upon request.

ACCESSIBILITY & SECURITY

Viewing Panel/Door

Standard glass, top-hinged, pneumatic Lift-Away, single-door. Extends **37.5** inches from the front of the case when in the up/open position. Securable with a keyed locking system located at the front/bottom of the viewing panel.

Lower Cabinet Doors & Drawers

Side-hinged, double-bay cabinet doors are secured with a separate key, keyed different from the viewing panel. Drawers contain an additional/separate locking system that is keyed the same as the viewing panel. Drawers utilize the push-release latching system. Drawer extension is 14 inches.

Shelves

The Jewel Box does not contain a shelf system for the viewing area. Elevations are achieved with the individual and stair-step riser systems. Drawers in the storage cabinet can be replaced with shelves upon custom orders only.

Wheel Base

All cases come equipped with a retractable wheel base system that is engaged when you need to position or move the case. We supply a special key used with a standard drill gun to raise and lower the wheel system.

VIEWING AREA/LIGHT PANEL SYSTEM



Figure 2- Interior

- Each Jewel Box comes equipped with 80 plug-in, standard LED lights. Lights can be inserted into any of the 310 socket positions on the case interior depending on the needs of the user.
- The Jewel Box interior, 5 piece, panel system is designed to provide the user with maximum flexibility for light placement.
- Light fixtures are coated on the outside to match the interior finish.
- Interchangeable, 5 piece interiors system is easily removable in the event that the user desires to change the interior color of the case viewing area or to access the electronic circuitry for maintenance.
- LED lighting system is housed in the top and side panels. The back and bottom panel are passive.
- Top panel contains 170 LED light positions. The top panel is channeled to help obscure the LED lights from view.
- Each side panel contains 60 LED light positions.
- Side panel LED positions are equipped with a spring loaded retractable cover that hides the LED socket from view when not in use.
- A power bar is located at the bottom back of the viewing area and is hidden from view by the bottom panel. The power bar is used for connecting backlighting accessories, sold separately.
- The interior light panel system is compatible with all of the light fixture types that include additional color temperatures and focusable spot lights, sold separately.

CONDITIONING

Filtered Overpressure Fan System. Maintains consistent clean air filtering and positive case pressure to prevent the infiltration of dust particles.

Fan

- DC axial fan
- 2200 RPM
- Impeller made of nylon reinforced with fiberglass
- Maximum operating temperature: + 158 °F
- Adjustable fan speed controller

Filter

- Very high efficiency Clean Room Filtration
- MPPS: H14 EN1822 – 99.995% Efficiency
- Accessible from top of case
- Replacements sold separately

ELECTRICAL INFORMATION

LED Light Fixtures

- Each Jewel Box comes equipped with (40) 3000K and (40) 5000K lights. Other temperatures available.
- 1W/light
- Lights are designed with adjustable heads for further control over light direction.
- Flood type beam spread

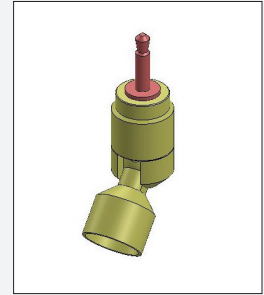


Figure 3- Standard LED Light

Power Supply

- AC Input, 50/60Hz
- 100-240VAC, 3.6A
- DC Output 24V
- Power cord: NEMA 5-15, C13 Connector, 18AWG/3Wire/ SJT, 8ft.

Heat Load

- 120W – 409 BTU/hour (Calculation based on (80) 1W LED lights in use)

Controls

- On/Off switches are located on the top of the case. OP fan, side LED panels, top LED panel and the power bar are all controlled by their own switch.