

LIGHT TOWER
SHOWCASE



FINE MINERALS
INTERNATIONAL

OVERVIEW



Name:

LIGHT TOWER

Part Number:

CR.007.5

Description:

The Light Tower maximizes the viewing area and resembles a more conventional display case with 4 tiers of glass shelving. The Light Tower contains all of our signature features including the plug & play LED lighting system, 420 light points for maximum versatility, connections for backlighting accessories, filtered fan system for dust prevention, a side-hinged glass door design, retractable wheel base system for easy moving, interchangeable interiors, and keyed security for the viewing area and storage cabinet.

Figure 1 – Light Tower CR.007.5

DIMENSIONS

OVERALL DIMENSIONS	Height	76.7 inches
	Width	37.4 inches
	Depth	19.8 inches
	Weight	485 pounds
VIEWING AREA	Height	56.25 inches
	Width	30.75 inches
	Depth	19.25 inches
SHELVES	Thickness	0.4 inches
	Width	30.5 inches
	Depth	18.9 inches
STORAGE	LOWER STORAGE BAY	
	Height	3.75 inches
	Width	32 inches
	Depth	19.25 inches

FINISHES

Exterior Finish
<p>The Light Tower is constructed with rigid aluminum framing and finished with factory coated standard glass.</p> <ul style="list-style-type: none">Standard colors are Black & WhiteCustom colors available upon requestWood exteriors and veneer matching available upon request
Interior Finish
<p>Constructed with a combination of wood and aluminum.</p> <ul style="list-style-type: none">Standard colors are Black & WhiteCustom colors available upon request

ACCESSIBILITY & SECURITY

Viewing Panel/Door

Standard glass, side-hinged, single bay-door. Extends 35.5 inches. from the front of the case when in the open position. Securable with a keyed locking system located at the right-bottom of the viewing panel.

Storage

Accessible when the viewing panel is in the open position.

Shelves

The Light Tower contains a shelf system for the viewing area. Includes (4) standard glass shelves. Shelves can be positioned up and down utilizing the steel pin/peg system on the side panels. Each shelf is 30.5" W x 18.9" D x 0.4" thick and has integrated rear steel bars used for powering FMI backlight systems.

Wheel Base

All cases come equipped with a retractable wheel base system that is engaged when you need to position or move the case. We supply a special key used with a standard drill gun to raise and lower the wheel system.

LIGHT PANEL SYSTEM

- Each Light Tower comes equipped with (20) 3000K & (20) 5000K plug-in, standard LED lights which can be inserted into any of the 420 socket positions on the case interior depending on the needs of the user
- The Light Tower interior, 5 piece panel system is designed to provide the user with maximum flexibility for light placement
- Light fixtures are coated on the outside to match the interior finish

LIGHT PANEL SYSTEM (CONT.)



Figure 2- Interior

- Interchangeable, 5 piece interior system is easily removable in the event that the user desires to change the interior color of the case viewing area or to access the electronic circuitry for maintenance
- LED lighting system is housed in the top and side panels (Back and bottom panel are passive)
- Top panel contains 100 LED light positions and is channeled to help obscure the LED lights from view
- Each side panel contains 160 LED light positions
- Side panel LED positions are equipped with a spring loaded retractable cover that hides the LED socket from view when not in use
- A Power Bar, located at the bottom back of the viewing area hidden from view by the bottom panel, is used for connecting backlighting accessories, sold separately
- The glass shelves are equipped with conducting metal rods at the back of each shelf and are connected to a power bar located vertically at the back left interior of the case (Light Tower includes (4) power connectors for the glass shelves)
- The interior light panel system is compatible with all FMI light fixture types that include additional color temperatures and focusable lights, sold separately

CONDITIONING

Filtered Overpressure Fan System. A positively charged air pressure system designed to prevent and eliminate dust.

Fan

- DC axial fan
- 2200 RPM
- Impeller made of nylon reinforced with fiberglass
- Maximum operating temperature: + 158 °F
- Adjustable fan speed controller

Filter

- Very high efficiency clean room filtration
- MPPS: H14 EN1822 – 99.995% Efficiency
- Accessible from top of case
- Replacements sold separately

ELECTRICAL INFORMATION**LED Light Fixtures**

- Each Light Tower comes equipped with (20) 3000K and (20) 5000K lights (Other temperatures available)
- 1W/light
- Lights are designed with adjustable heads for further control over light direction
- Flood type beam spread

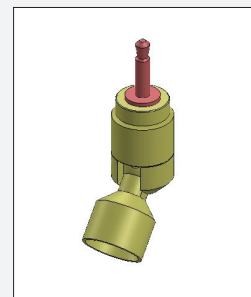


Figure 3- Standard LED Light

Power Supply

- AC Input, 50/60Hz
- 100-240VAC, 3.6A
- DC Output 24V
- Power cord: NEMA 5-15, C13 Connector, 18AWG/3Wire/SJT, 8ft

Controls

- On/Off switches are located on the top of the case; OP fan, side LED panels, top LED panel and the power bar are all controlled by their own switch