

PEDESTAL CASE SHOWCASE



OVERVIEW

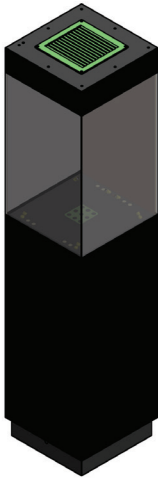


Figure 1 – Private Showroom Case CR.010

Name:

PEDESTAL CASE

W: 16", D: 16", H: 70" – 53 POINT LIGHTING GRID

Part Number:

CR.117

Description:

The Pedestal Case offers the aesthetics and singular focus of a pedestal, with the added lighting capability and protection of a case. It's ideal for specimens with a 360° viewing capability that might otherwise become obstructed in a regular display unit. Comes standard in four different sizes, equipped with a lighting grid for use with our Plug & Play lights, a dust prevention pressure system, and storage space. The capacity is 1-4 specimens depending on their size.

DIMENSIONS

OVERALL DIMENSIONS	Width	16 inches
	Depth	16 inches
	Height	70 inches
	Weight	228 pounds

VIEWING AREA	Width	15.5 inches
	Depth	14.8 inches
	Height	26 inches

STORAGE	LOWER STORAGE BAY	
	Width	13.5 inches
	Depth	14.4 inches
	Height	21.5 inches

FINISHES

Exterior Finish

The Pedestal Case is constructed with rigid aluminum framing and finished with factory coated standard glass.

- *Standard colors are Black & White*
- *Custom colors available upon request*
- *Wood exteriors and veneer matching available upon request*

Interior Finish

Constructed with a combination of wood and aluminum.

- *Standard colors are Black & White*
- *Custom colors available upon request*

ACCESSIBILITY & SECURITY

Viewing Panel/Door

Standard glass, side hinged, single bay-door. Extends **15.7 inches** from the front of the case when in the open position. Securable with a keyed locking system located at the front side of the door.

Storage

Accessible when the door is in the open position.

Wheel Base

All cases come equipped with a retractable wheel base system that is engaged when you need to position or move the case. We supply a special key used with a standard drill gun to raise and lower the wheel system.

LIGHT PANEL SYSTEM

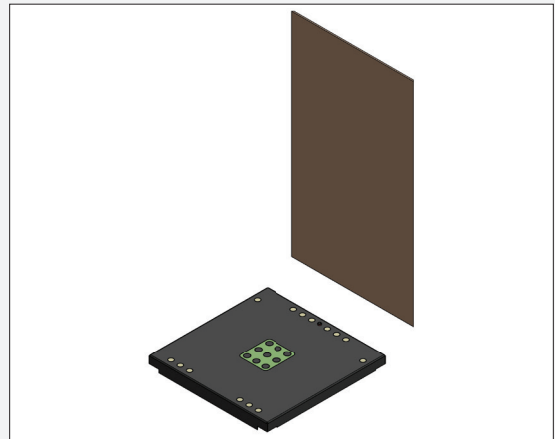


Figure 2- Interior

- Model CR.117 features 53 socket positions on the case interior; individual LED lights are sold separately
- The Pedestal Case interior, 2 piece panel system is designed to provide the user with maximum flexibility for light placement
- Interchangeable, 2 piece interiors system is easily removable in the event that the user desires to change the interior color of the case viewing area or to access the electronic circuitry for maintenance
- LED lighting system is housed in the top and bottom panels
- Top panel contains 30 LED light positions and is channeled to help obscure the LED lights from view
- Bottom panel contains 23 LED lighting positions with 9 being centered in the middle of the platform for under mineral lighting
- Bottom panel LED positions are equipped with a spring loaded retractable cover that hides the LED socket from view when not in use
- 2, 24V female jacks are located in the middle of the back row and center of the bottom panel, used for connecting backlighting accessories, sold separately
- The interior light panel system is compatible with all FMI light fixture types that include additional color temperatures and focusable lights, sold separately

AIR HANDLING

Filtered Overpressure Fan System. Maintains consistent clean air filtering and positive case pressure to prevent the infiltration of dust particles.

Fan

- *DC axial fan*
- *2200 RPM*
- *Impeller made of nylon reinforced with fiberglass*
- *Maximum operating temperature: + 158 °F*
- *Adjustable fan speed controller*

Filter

- *Very high efficiency Clean Room Filtration*
- *MPPS: H14 EN1822 – 99.995% Efficiency*
- *Accessible from storage area*
- *Replacements sold separately*

ELECTRICAL INFORMATION**Power Supply**

- *AC Input, 47/63Hz*
- *88-264VAC, 8.4A*
- *DC Output 24V*
- *Power cord: NEMA 5-15, C13 Connector, 18AWG/3Wire/SJT, 8ft.*

Controls

- *On/Off switches are located inside the door of the case; OP fan, bottom LED panels, and top LED panel are all controlled by their own switch*

OVERVIEW

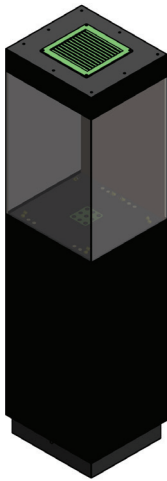


Figure 1 – Private Showroom Case CR.010

Name:

PEDESTAL CASE

W: 18", D: 16", H: 70" – 63 POINT LIGHTING GRID

Part Number:

CR.118

Description:

The Pedestal Case offers the aesthetics and singular focus of a pedestal, with the added lighting capability and protection of a case. It's ideal for specimens with a 360° viewing capability that might otherwise become obstructed in a regular display unit. Comes standard in four different sizes, equipped with a lighting grid for use with our Plug & Play lights, a dust prevention pressure system, and storage space. The capacity is 1-4 specimens depending on their size.

DIMENSIONS

OVERALL DIMENSIONS	Width	18 inches
	Depth	16 inches
	Height	70 inches
	Weight	237 pounds

VIEWING AREA	Width	15.5 inches
	Depth	14.8 inches
	Height	26 inches

STORAGE	LOWER STORAGE BAY	
	Width	15.5 inches
	Depth	14.4 inches
	Height	21.5 inches

FINISHES

Exterior Finish

The Pedestal Case is constructed with rigid aluminum framing and finished with factory coated standard glass.

- Standard colors are Black & White
- Custom colors available upon request
- Wood exteriors and veneer matching available upon request

Interior Finish

Constructed with a combination of wood and aluminum.

- Standard colors are Black & White
- Custom colors available upon request

ACCESSIBILITY & SECURITY

Viewing Panel/Door

Standard glass, side hinged, single bay-door. Extends **17.7** inches from the front of the case when in the open position. Securable with a keyed locking system located at the front side of the door.

Storage

Accessible when the door is in the open position.

Wheel Base

All cases come equipped with a retractable wheel base system that is engaged when you need to position or move the case. We supply a special key used with a standard drill gun to raise and lower the wheel system.

LIGHT PANEL SYSTEM

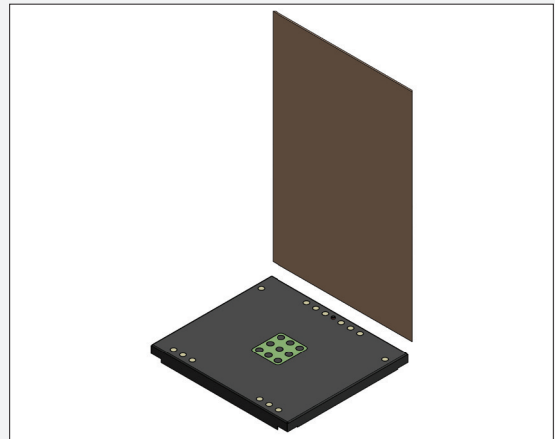


Figure 2- Interior

- Model CR.118 features 63 socket positions on the case interior; individual LED lights are sold separately
- The Pedestal Case interior, 2 piece panel system is designed to provide the user with maximum flexibility for light placement
- Interchangeable, 2 piece interiors system is easily removable in the event that the user desires to change the interior color of the case viewing area or to access the electronic circuitry for maintenance
- LED lighting system is housed in the top and bottom panels
- Top panel contains 40 LED light positions and is channeled to help obscure the LED lights from view
- Bottom panel contains 23 LED lighting positions with 9 being centered in the middle of the platform for under mineral lighting
- Bottom panel LED positions are equipped with a spring loaded retractable cover that hides the LED socket from view when not in use
- 2, 24V female jacks are located in the middle of the back row and center of the bottom panel, used for connecting backlighting accessories, sold separately
- The interior light panel system is compatible with all FMI light fixture types that include additional color temperatures and focusable lights, sold separately

AIR HANDLING

Filtered Overpressure Fan System. Maintains consistent clean air filtering and positive case pressure to prevent the infiltration of dust particles.

Fan

- DC axial fan
- 2200 RPM
- Impeller made of nylon reinforced with fiberglass
- Maximum operating temperature: + 158 °F
- Adjustable fan speed controller

Filter

- Very high efficiency Clean Room Filtration
- MPPS: H14 EN1822 – 99.995% Efficiency
- Accessible from storage area
- Replacements sold separately

ELECTRICAL INFORMATION**Power Supply**

- AC Input, 50/60Hz
- 100-240VAC, 3.6A
- DC Output 24V
- Power cord: NEMA 5-15, C13 Connector, 18AWG/3Wire/SJT, 8ft.

Controls

- On/Off switches are located inside the door of the case; OP fan, bottom LED panels, and top LED panel are all controlled by their own switch

OVERVIEW

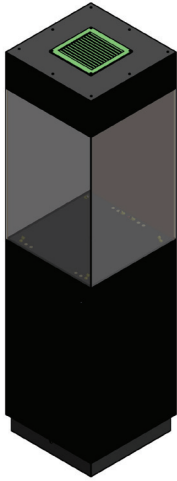


Figure 1 – Private Showroom Case CR.010

Name:

PEDESTAL CASE

W: 20", D: 20", H: 76.7" – 84 POINT LIGHTING GRID

Part Number:

CR.124

Description:

The Pedestal Case offers the aesthetics and singular focus of a pedestal, with the added lighting capability and protection of a case. It's ideal for specimens with a 360° viewing capability that might otherwise become obstructed in a regular display unit. Comes standard in four different sizes, equipped with a lighting grid for use with our Plug & Play lights, a dust prevention pressure system, and storage space. The capacity is 1-4 specimens depending on their size.

DIMENSIONS

OVERALL DIMENSIONS	Width	20 inches
	Depth	20 inches
	Height	76.7 inches
	Weight	259 pounds

VIEWING AREA	Width	19.5 inches
	Depth	19.2 inches
	Height	30 inches

STORAGE	LOWER STORAGE BAY	
	Width	17.5 inches
	Depth	18.4 inches
	Height	21 inches

FINISHES

Exterior Finish
The Pedestal Case is constructed with rigid aluminum framing and finished with factory coated standard glass.
<ul style="list-style-type: none"> • Standard colors are Black & White • Custom colors available upon request • Wood exteriors and veneer matching available upon request

Interior Finish
Constructed with a combination of wood and aluminum.
<ul style="list-style-type: none"> • Standard colors are Black & White • Custom colors available upon request

ACCESSIBILITY & SECURITY

Viewing Panel/Door

Standard glass, side hinged, single bay-door. Extends **24.5** inches from the front of the case when in the open position. Securable with a keyed locking system located at the front side of the door.

Storage

Accessible when the door is in the open position. Includes adjustable shelves.

Wheel Base

All cases come equipped with a retractable wheel base system that is engaged when you need to position or move the case. We supply a special key used with a standard drill gun to raise and lower the wheel system.

LIGHT PANEL SYSTEM

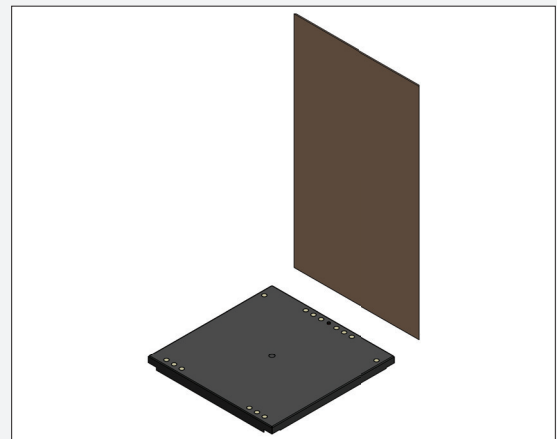


Figure 2- Interior

- Model CR.124 features 84 socket positions on the case interior; individual LED lights are sold separately
- The Pedestal Case interior, 2 piece panel system is designed to provide the user with maximum flexibility for light placement
- Interchangeable, 2 piece interiors system is easily removable in the event that the user desires to change the interior color of the case viewing area or to access the electronic circuitry for maintenance
- LED lighting system is housed in the top and bottom panels
- Top panel contains 70 LED light positions and is channeled to help obscure the LED lights from view
- Bottom panel contains 14 LED lighting positions
- Bottom panel LED positions are equipped with a spring loaded retractable cover that hides the LED socket from view when not in use
- 2, 24V female jacks are located in the middle of the back row and center of the bottom panel, used for connecting backlighting accessories, sold separately
- The interior light panel system is compatible with all FMI light fixture types that include additional color temperatures and focusable lights, sold separately

AIR HANDLING

Filtered Overpressure Fan System. Maintains consistent clean air filtering and positive case pressure to prevent the infiltration of dust particles.

Fan

- DC axial fan
- 2200 RPM
- Impeller made of nylon reinforced with fiberglass
- Maximum operating temperature: + 158 °F
- Adjustable fan speed controller

Filter

- Very high efficiency Clean Room Filtration
- MPPS: H14 EN1822 – 99.995% Efficiency
- Accessible from storage area
- Replacements sold separately

ELECTRICAL INFORMATION**Power Supply**

- AC Input, 50/60Hz
- 100-240VAC, 3.6A
- DC Output 24V
- Power cord: NEMA 5-15, C13 Connector, 18AWG/3Wire/SJT, 8ft.

Controls

- On/Off switches are located inside the door of the case; OP fan, bottom LED panels, and top LED panel are all controlled by their own switch

OVERVIEW

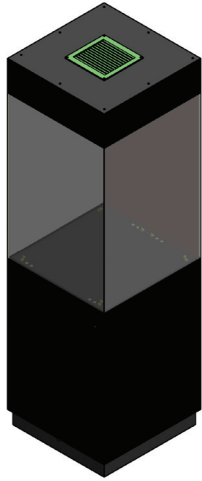


Figure 1 – Private Showroom Case CR.010

Name:

PEDESTAL CASE

W: 24", D: 24", H: 78.8" – 119 POINT LIGHTING GRID

Part Number:

CR.123

Description:

The Pedestal Case offers the aesthetics and singular focus of a pedestal, with the added lighting capability and protection of a case. It's ideal for specimens with a 360° viewing capability that might otherwise become obstructed in a regular display unit. Comes standard in four different sizes, equipped with a lighting grid for use with our Plug & Play lights, a dust prevention pressure system, and storage space. The capacity is 1-4 specimens depending on their size.

DIMENSIONS

OVERALL DIMENSIONS	Width	24 inches
	Depth	24 inches
	Height	78.8 inches
	Weight	327 pounds

VIEWING AREA	Width	23.5 inches
	Depth	23.2 inches
	Height	36 inches

STORAGE	LOWER STORAGE BAY	
	Width	21.5 inches
	Depth	22.5 inches
	Height	19 inches

FINISHES

Exterior Finish

The Pedestal Case is constructed with rigid aluminum framing and finished with factory coated standard glass.

- *Standard colors are Black & White*
- *Custom colors available upon request*
- *Wood exteriors and veneer matching available upon request*

Interior Finish

Constructed with a combination of wood and aluminum.

- *Standard colors are Black & White*
- *Custom colors available upon request*

ACCESSIBILITY & SECURITY

Viewing Panel/Door

Standard glass, side hinged, single bay-door. Extends **24.5** inches from the front of the case when in the open position. Securable with a keyed locking system located at the front side of the door.

Storage

Accessible when the door is in the open position. Includes adjustable shelves.

Wheel Base

All cases come equipped with a retractable wheel base system that is engaged when you need to position or move the case. We supply a special key used with a standard drill gun to raise and lower the wheel system.

LIGHT PANEL SYSTEM

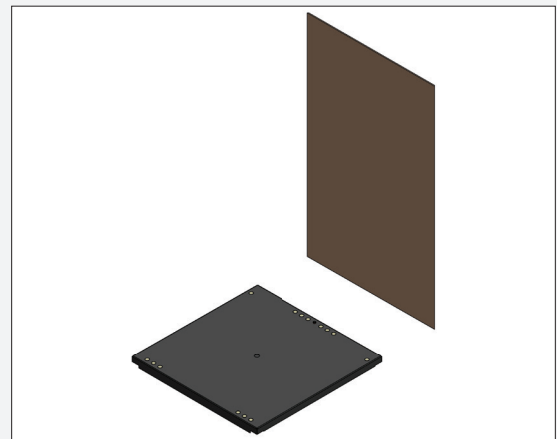


Figure 2- Interior

- Model CR.123 features 119 socket positions on the case interior; individual LED lights are sold separately
- The Pedestal Case interior, 2 piece panel system is designed to provide the user with maximum flexibility for light placement
- Interchangeable, 2 piece interiors system is easily removable in the event that the user desires to change the interior color of the case viewing area or to access the electronic circuitry for maintenance
- LED lighting system is housed in the top and bottom panels
- Top panel contains 105 LED light positions and is channeled to help obscure the LED lights from view
- Bottom panel contains 14 LED lighting positions
- Bottom panel LED positions are equipped with a spring loaded retractable cover that hides the LED socket from view when not in use
- 2, 24V female jacks are located in the middle of the back row and center of the bottom panel, used for connecting backlighting accessories, sold separately
- The interior light panel system is compatible with all FMI light fixture types that include additional color temperatures and focusable lights, sold separately

AIR HANDLING

Filtered Overpressure Fan System. Maintains consistent clean air filtering and positive case pressure to prevent the infiltration of dust particles.

Fan

- DC axial fan
- 2200 RPM
- Impeller made of nylon reinforced with fiberglass
- Maximum operating temperature: + 158 °F
- Adjustable fan speed controller

Filter

- Very high efficiency Clean Room Filtration
- MPPS: H14 EN1822 – 99.995% Efficiency
- Accessible from storage area
- Replacements sold separately

ELECTRICAL INFORMATION**Power Supply**

- AC Input, 50/60Hz
- 100-240VAC, 3.6A
- DC Output 24V
- Power cord: NEMA 5-15, C13 Connector, 18AWG/3Wire/SJT, 8ft.

Controls

- On/Off switches are located inside the door of the case; OP fan, bottom LED panels, and top LED panel are all controlled by their own switch